

Soundside Learning

This Week On Core Sound

Earth Day Exhibitor Profile

Triple S Bee Farm

Core Sound's 2022 celebration of Earth Day is slated to be the biggest on record! On Friday, April 8th and Saturday, April 9th the Core Sound Waterfowl Museum & Heritage Center will have the honor of hosting over 500 students and families, coming from far and wide to learn from over twenty professional education exhibitors from around the region.

One of those wonderful exhibits will be run by the Triple S Bee Farm of Stella, NC. The Triple S Bee Farm is family owned and has been producing honey and other products for nearly 30 years.



A keeper works with honeybees at Triple S Bee Farm.
Photo: Triple S Bee Farm

Home to more than five hundred hives, the farm provides pollination for local farmers and also hosts school groups with opportunities for students to learn first-hand about the key role that honeybees play as pollinators.

During this year's Core Sound Earth Day you can find the folks (and the bees) from Triple S Bee Farm as they team up with Down East native and former head of the Crystal Coast Beekeepers Association, Russ Lewis, for a day that's sure to be "buzzing" with excitement!



Sound Reading
Material For You &
Your Child

The Honeybee Man

By: Lela Nargi and
Krysten Brooker

Every morning, Fred climbs three flights of stairs and greets the members of his enormous family: "Good morning, my bees, my darlings!" His honeybee workers are busy—they tend the hive, feed babies, and make wax rooms. so that, one day, Fred can make his famous honey, something the entire neighborhood looks forward to tasting. This book offers an inside look at the life of an endearing beekeeper and the honey-making process.

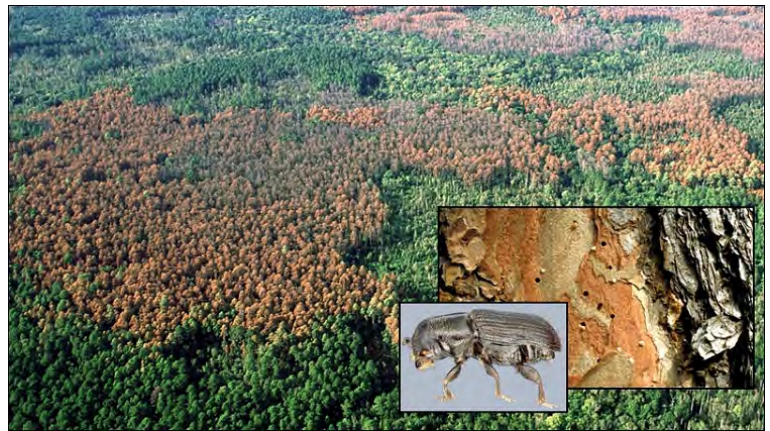
A Small Beetle, A Huge Problem

Southern Pine Beetles come with springtime

There is perhaps no surer sign that springtime is upon us than the yellow-green clouds of pollen that fill the air and coat every imaginable surface this time of year. Though most of us dread the seasonal allergies that can accompany the early spring season, it is also a beautiful time of rebirth for the world around us.

This seasonal rebirth of the natural world is not limited to plants and trees alone, though. As anyone in the Down East communities of Carteret County can tell you, spring also marks the return of a host of unpleasant insects like mosquitos, black flies, and horse flies. Perhaps the worst, though, is overshadowed by their propensity to prey, not on humans, but pine trees!

If you've ever noticed large swaths of pine forest that appear to be dead and dying for no apparent reason, while around them stand seemingly healthy pines, you have witnessed the destructive capabilities of the Southern Pine Beetle.



An example of forest devastation caused by the Southern Pine Beetle.

Photo: NC Forest Service

According to the [North Carolina Forest Service](#), the Southern Pine Beetle is the most destructive insect in North Carolina. From the late 90s to the early 2000s, these tiny beetles accounted for nearly sixty million dollars in lost timber in North Carolina.

Only about an eighth of an inch long, these tiny insects leave their signature mark on pine forests by burrowing into the bark of the tree where they will deposit their eggs into tiny groove-like markings. The cutting of these grooves attacks the phloem of the tree, destroying their ability to derive nutrients from the soil. From late March to early April of each year, the larvae will hatch and make their way out of the tree bark.

Southern Pine Beetle numbers have risen in Carteret County during recent years. If you suspect that trees on your property are under attack from these insects, the [NC Cooperative Extension](#) requests that you contact them to allow for preventative measures to be taken and for swarms to be contained.

As we transition from winter to spring, be on the lookout for the signs of these creatures.



Be on the lookout in next week's edition...

News and notes about 2022 Core Sound Summer Camps

